

# MONTHLY MEMBERSHIP PROGRESS REPORT

LOCATION ILLINOIS

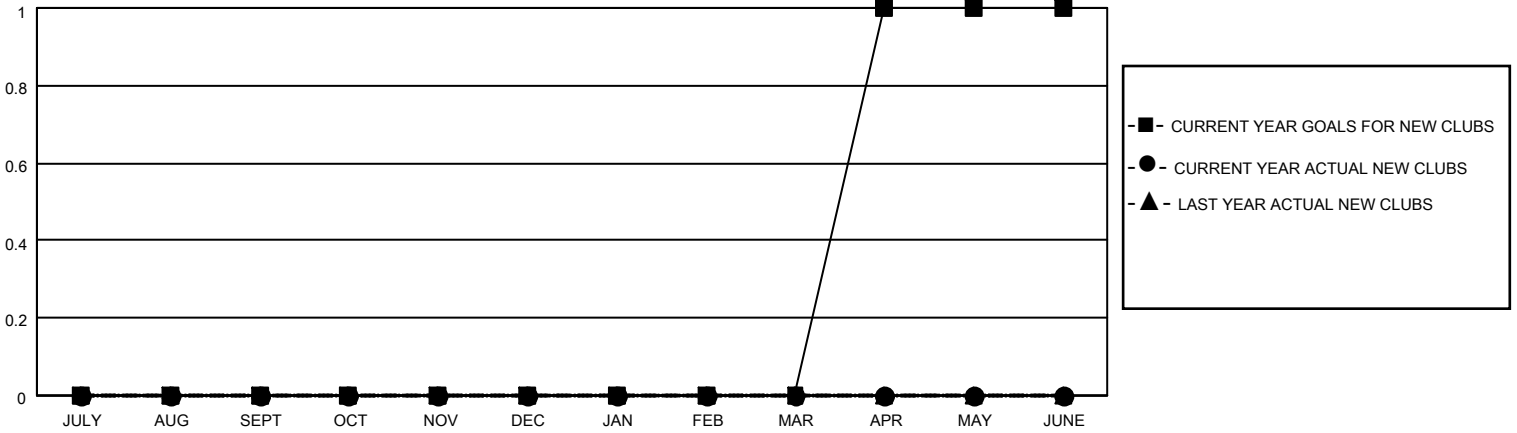
District 1 BK

Results as of: 3/31/2021

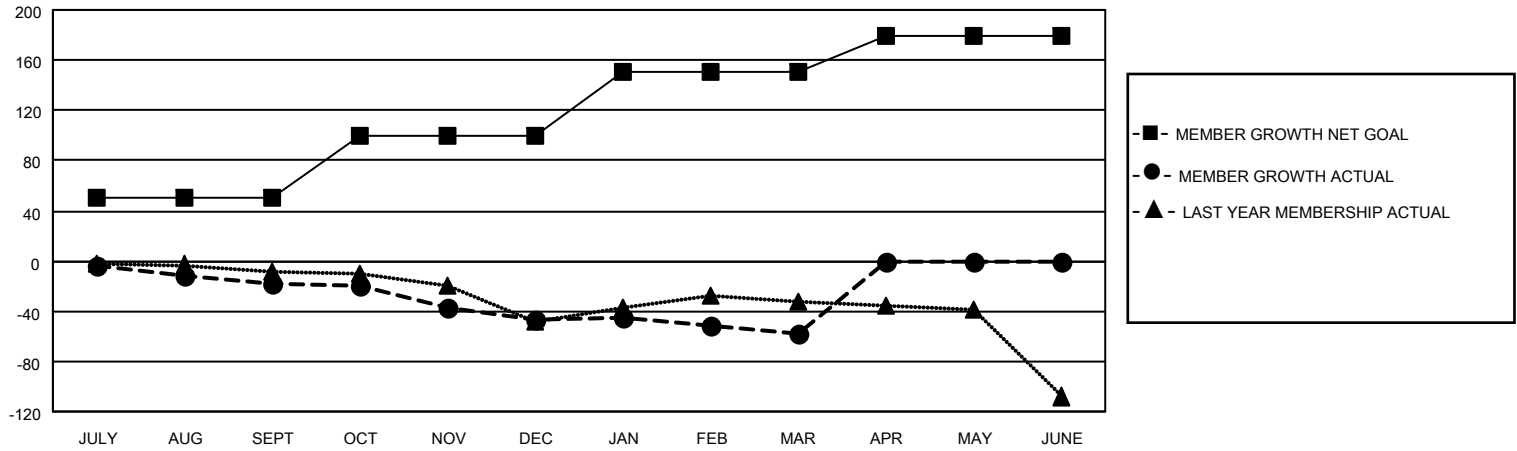
Clubs			
RESULTS FOR 2020-2021			
QUARTER	NEW CLUB GOAL	NEW CLUBS	DROPPED CLUBS
JULY/AUG/SEPT	0	0	1
OCT/NOV/DEC	0	0	0
JAN/FEB/MAR	0	0	0
APR/MAY/JUNE	1	0	0

Members			
RESULTS FOR 2020-2021			
QUARTER	MEMBER GROWTH NET GOAL	MEMBER GROWTH ACTUAL	DROPPED MEMBERS ACTUAL (including transfers)
JULY/AUG/SEPT	50	21	38
OCT/NOV/DEC	50	24	48
JAN/FEB/MAR	50	20	29
APR/MAY/JUNE	30	0	0

**GOALS AND ACTUAL NEW CLUBS CUMULATIVE**



**GOALS AND ACTUAL MEMBERS CUMULATIVE**



DROPPED CLUBS: 1	19 CLUBS OF 63 ADDED 1 OR MORE NEW MEMBERS	<u>GENDER DISTRIBUTION</u>
<u>DROPPED MEMBERS</u>	<a href="#">CLICK HERE FOR CUMULATIVE MEMBERSHIP DATA</a>	MALE            1,365 (76.17%)
DECEASED            26		FEMALE         427 (23.83%)
CLUB CANCELLED      0		TOTAL FAMILY UNIT MEMBERS            290
OTHER                 89		FAMILY MEMBERS PAYING HALF DUES            147
<b>TOTAL                 115</b>		